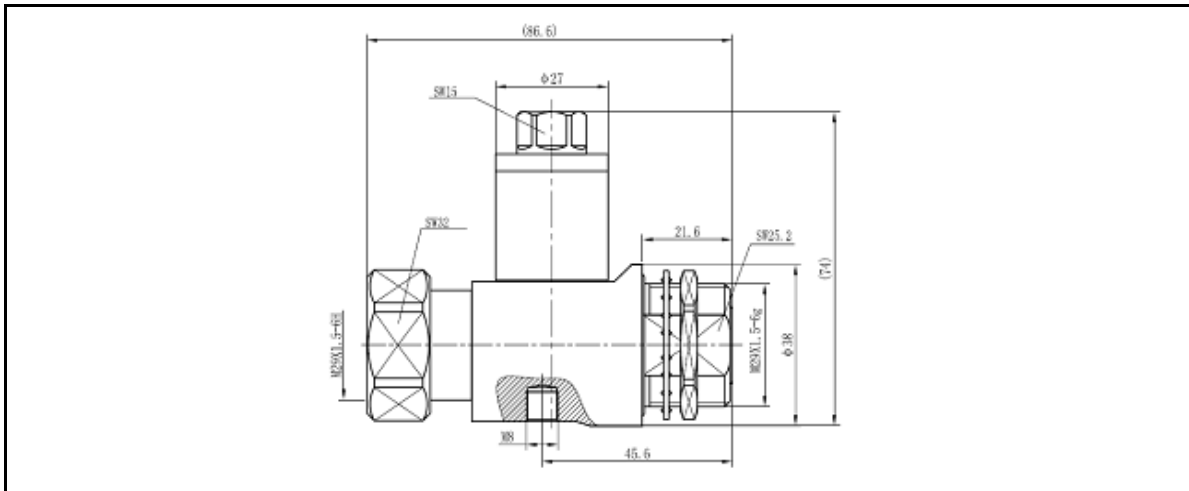


1/4λ Surge Arrestor Wide Band Non-directional
Electrical Specifications

Working Frequency	800 - 960 / 1710 - 2200 MHz
Characteristic Impedance	50 Ω
Return Loss	≥26dB 800 to 960MHz
	≥21dB 960 to 1700MHz
	≥26dB 1710 to 2200MHz
Insertion Loss	≤ 0.1 dB
PIM @2*20 W	> 150 dBc
Nominal Discharge Current (8/20 μS)	30 kA
Max. Discharge Current (8/20 μS)	60 kA
Max. Output Power	2500 W

Mechanical Specifications

Connectors	DIN Female Bulkhead / Male
Net Weight	520 g
IP Grade	IP67
Working Temperature	-40 °C ~ +85 °C


Installation

1. Installed to Arrestor Grounding Frame or Other Grounding Bars or Cables.
2. Fixed to and Supported by Grounding Frame or Grounding Bar with the Din Bulkhead Nut.
3. IMPORTANT: Grounding Surface Area Minimum 2.5 mm.

Maintenance

1. 1/4 Wavelength Design, No Replacement Needed after Multiple Strikes.
2. Routine Testing Standard: Resistance on outer conductor of cable should be lower than 0.5 mΩ. Otherwise, grounding needs to be checked or arrestor needs to be replaced.
3. Inspection & Testing: Inspection and testing needed after strike or strikes.